



## Dock Street, London, E1 8QU

A modern one bedroom naturally bright apartment; located moments from Tower Hill, Aldgate and Aldgate East stations offering excellent transport across London.

The apartment boasts a generous open-plan kitchen and living room with access to a private balcony and plenty of space to dine, a spacious double bedroom with built-in storage, and a sleek bathroom. Additional storage can be found in the hallway.

The property is surrounded by a plethora of local amenities such as cafes, restaurants, fitness centres, as well as local parks.

- Modern One Bedroom Apartment
- Excellent Transport Links
- Plenty of Storage
- Open-Plan Kitchen and Living
- Private Balcony
- Great Location

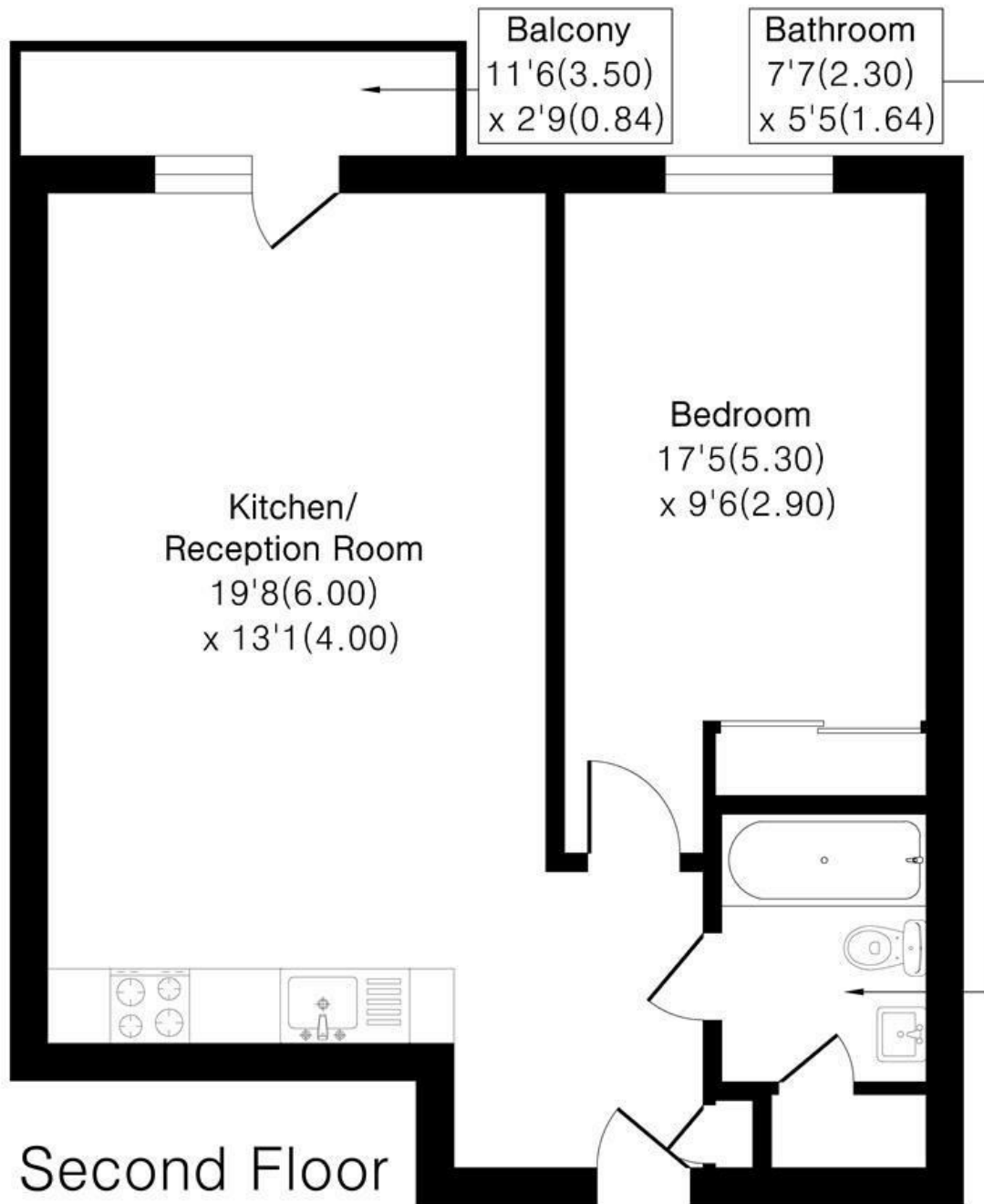
**Alex & Matteo**  
ESTATE AGENTS

**£2,300 Per month**

# Luxe Tower E1

Approximate Area = 559 sq ft / 51.9 sq m

For identification only - Not To Scale



**Alex & Matteo**  
ESTATE AGENTS

Floor plan Produced in accordance with RICS Property Measurement 2nd Edition.  
Incorporating International Property Measurement Standards (IPMS2 Residential).  
Produced for Alex & Matteo Estate Agents.



Energy Efficiency Rating		
	Current	Potential
Very energy efficient - lower running costs		
(92 plus) <b>A</b>		
(81-91) <b>B</b>	83	83
(69-80) <b>C</b>		
(55-68) <b>D</b>		
(39-54) <b>E</b>		
(21-38) <b>F</b>		
(1-20) <b>G</b>		
Not energy efficient - higher running costs		
England & Wales <small>EU Directive 2002/91/EC</small>		